

# Quartet corda Op. 59

## Núm. 3

L.V.Beethoven  
Arr. E. Iniesta

Allegro molto

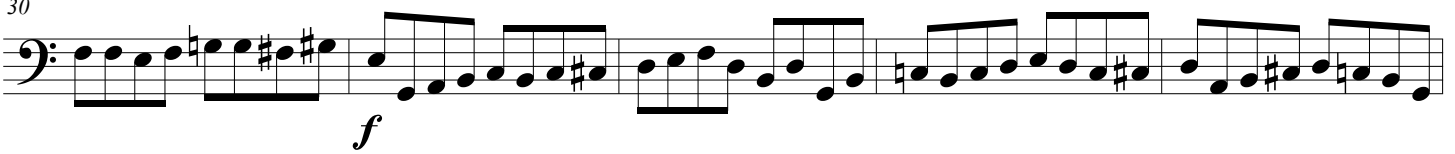
20



25



30



35



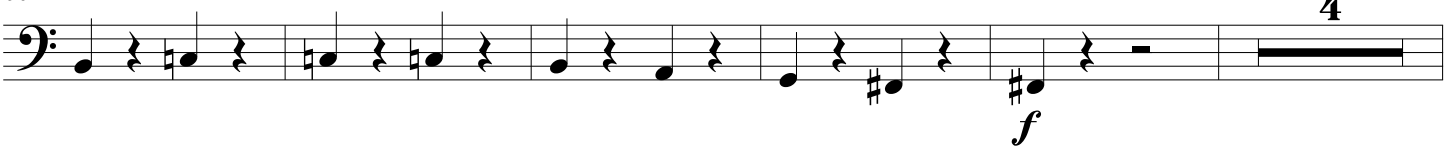
42



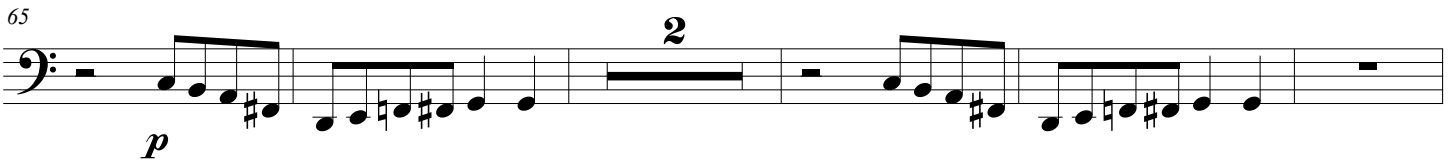
49



56



65



Quartet corda Op. 59  
Núm. 3

72

*cresc.* *f*

This musical staff covers measures 72 to 78. It begins with a bass clef and a key signature of one flat. The melody starts with a half note G2, followed by quarter notes A2, B2, and C3. A slur covers measures 73-74, with a hairpin crescendo symbol below. The melody continues with quarter notes D3, E3, and F3, followed by a dotted half note G3. A sharp sign is placed above the G3 note. The staff concludes with a quarter note G3 and a quarter rest. The dynamic marking *f* is placed at the end of the staff.

79

*p*

This musical staff covers measures 79 to 83. It begins with a bass clef and a key signature of one flat. Measures 79-81 consist of quarter notes G2, A2, B2, and C3, each followed by a quarter rest. Measure 82 contains a whole rest. Measure 83 features a sixteenth-note triplet starting on D3, followed by eighth-note triplets on E3, F3, and G3. The dynamic marking *p* is placed below the staff.

84

*cresc. sf p cresc.*

This musical staff covers measures 84 to 88. It begins with a bass clef and a key signature of one flat. Measures 84-85 are eighth-note triplets starting on D3, followed by eighth-note triplets on E3, F3, and G3. Measure 86 contains a quarter note G3 and a quarter rest. Measure 87 features eighth-note triplets starting on D3, followed by eighth-note triplets on E3, F3, and G3. Measure 88 features eighth-note triplets starting on D3, followed by eighth-note triplets on E3, F3, and G3. The dynamic markings *cresc.*, *sf*, *p*, and *cresc.* are placed below the staff.

89

*ff*

This musical staff covers measures 89 to 93. It begins with a bass clef and a key signature of one flat. Measures 89-91 are eighth-note triplets starting on D3, followed by eighth-note triplets on E3, F3, and G3. Measure 92 contains a quarter note G3 and a quarter rest. Measure 93 contains a whole rest. The dynamic marking *ff* is placed below the staff.